



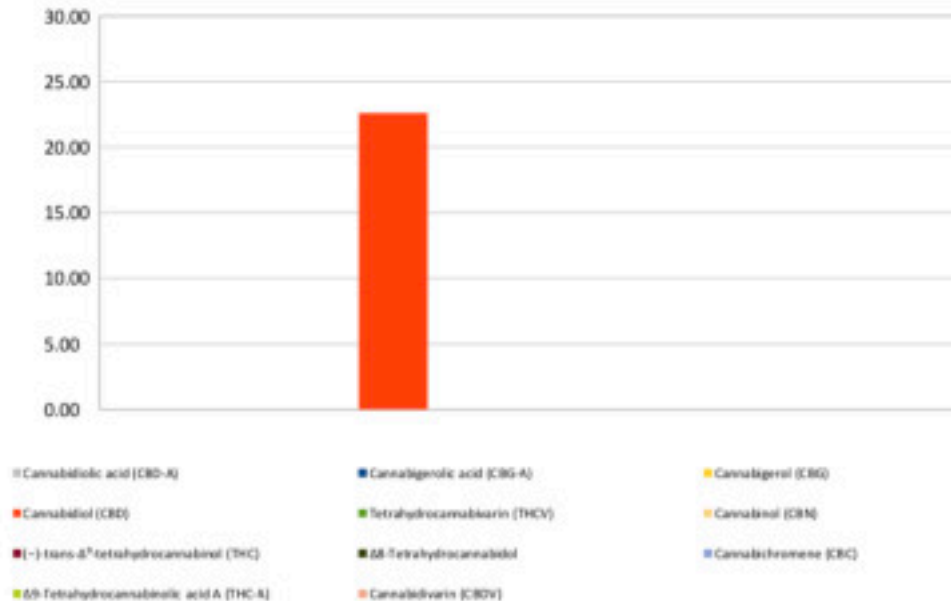
# Cannabinoid Profile

**Customer:** Poison CBD LLC  
**Customer Sample ID:** Sour Worms 25mg  
**Laboratory Number:** 223178-1041  
**Extraction Technician:** DG  
**Analytical Chemist:** AZ

Extraction Date(s):	Analysis Date(s)
01/22/2020	01/22/2020

Cannabinoid (HPLC)		Results	
	LOD (mg/g)	Percent	mg/gummy
Cannabidiol (CBD)	<0.2	2.37%	23.70
Tetrahydrocannabivarin (THCV)	<0.2		
Cannabinol (CBN)	<0.2		
[-]-trans- $\Delta^8$ -tetrahydrocannabinol (THC)	<0.2		
$\Delta^8$ -Tetrahydrocannabinol	<0.2		
Cannabichromene (CBC)	<0.2		
$\Delta^9$ -Tetrahydrocannabinolic acid A (THC-A)	<0.2		
Cannabigerol (CBG)	<0.2		
Cannabidiolic acid (CBD-A)	<0.2		
Cannabigeronic acid (CBG-A)	<0.2		
Cannabidivarin (CBDV)	<0.2		
Cannabinoids Total		Percent	mg/gummy
Max Active THC		0.00%	0.00
Max Active CBD		2.37%	23.70
T. Active Cannabinoids		2.37%	23.70
Total Cannabinoids		2.37%	23.70
Ratios			
NA CBD to THC		0.00 :1 THC to CBD	

Cannabinoid (mg/g)



Altitude Consulting, LLC utilizes NIST traceable Reference Standards and Certified Reference Material to calibrate analytical instruments along with proven analytical methods. The methods are applied in the most ethical manner following good laboratory practice guidelines. The results of this report are based solely on the sample submitted and cannot be reproduced.

This report expires 30 days after analysis date.